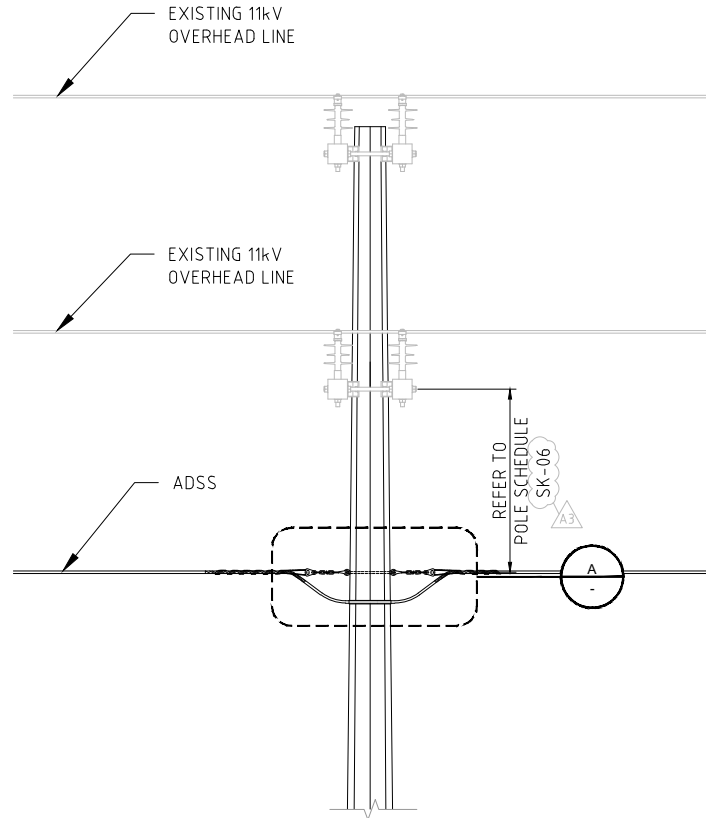
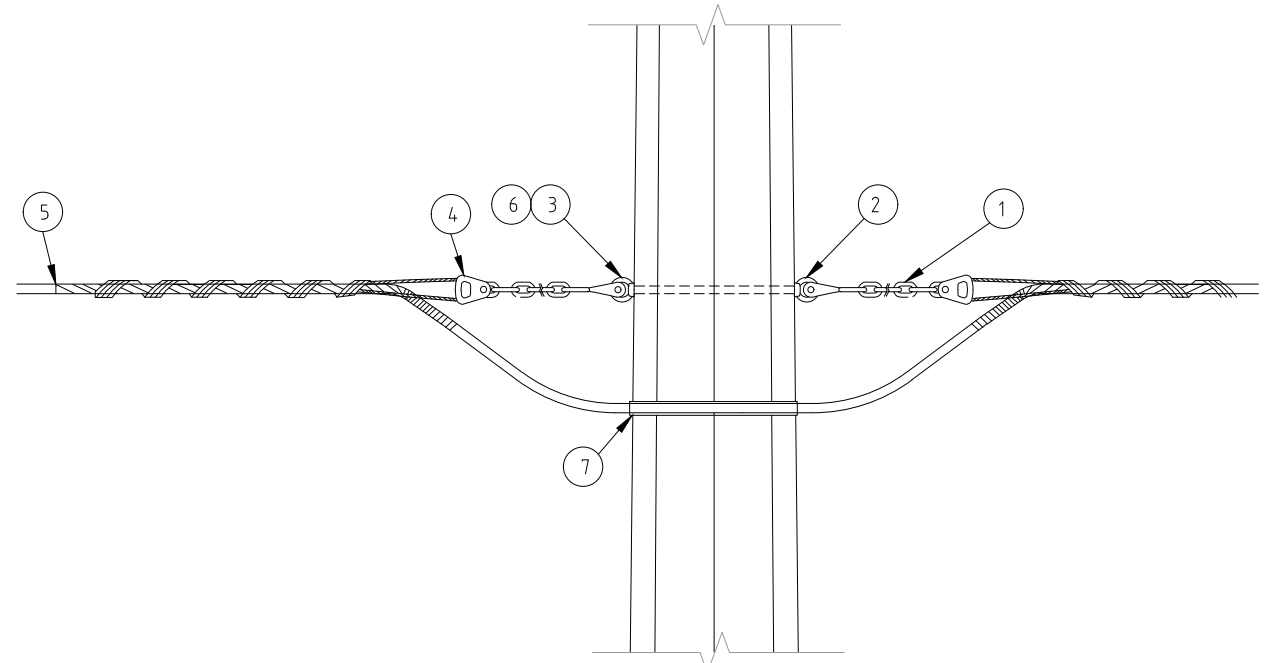


LONGITUDINAL FACE
SCALE 1:20



TRANSVERSE FACE
BOLTED ASSEMBLY
SCALE 1:20



DETAIL A
SCALE 1:5

MATERIALS LIST - BOLTED ASSEMBLY		
TAG NO.	ITEM	QTY
1	ADSS EXTENSION LINKS 10mm 392 LONG	2
2	M16 EYE BOLT	1
3	M16 EYENUT	1
4	AL CLEVIS THIMBLE 27mm GROOVE	2
5	FIBERLIGN DIELECTRIC DEAD END	2
6	M16 WASHER	2
7	CABLE ABRASION PROTECTOR	1

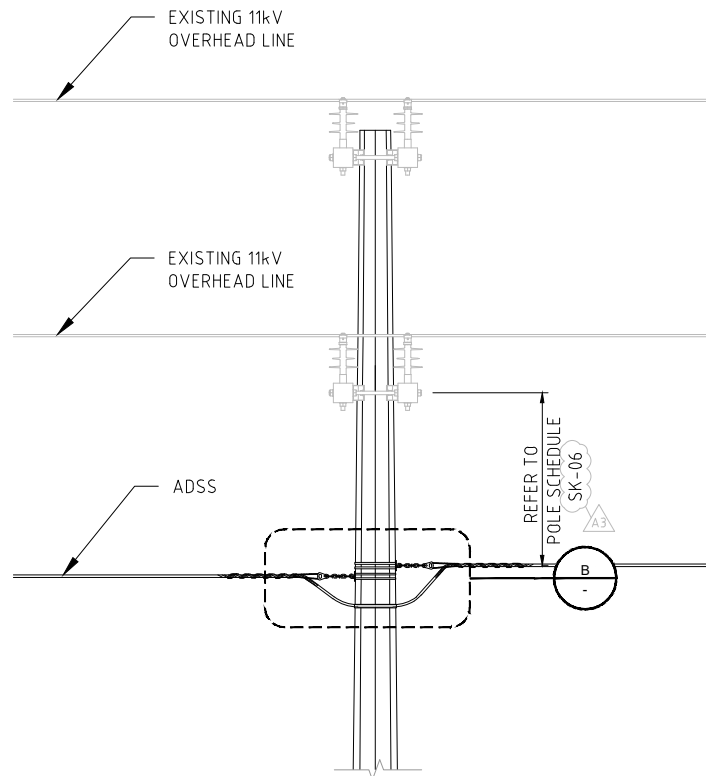
MATERIALS LIST - BANDED ASSEMBLY		
TAG NO.	ITEM	QTY
8	FIBERLIGN DIELECTRIC DEAD END	2
9	AL CLEVIS THIMBLE 27mm GROOVE	1
10	ADSS EXTENSION LINKS 10mm 392 LONG	1
11	19mm STAINLESS STEEL BAND & BUCKLE	4
12	16mm GALV. HEAVY DUTY HOOK PLATE	2
13	CABLE ABRASION PROTECTOR	1

REFERENCE DRAWINGS:

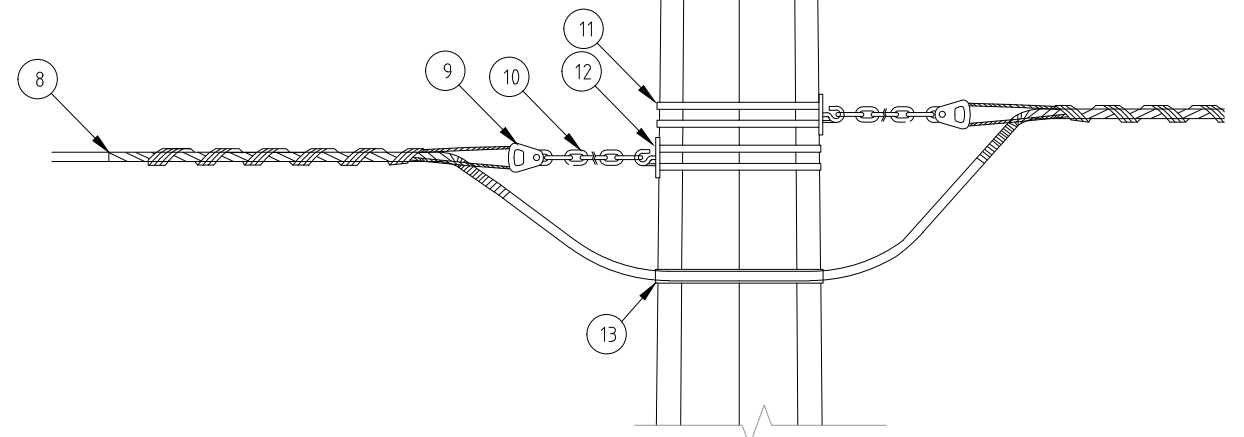
SK-06 ADSS CONSTRUCTION SCHEDULE
SK-12 ADSS PROJECT MATERIAL SCHEDULE

NOTES

- MAX ANGLE DEVIATION BETWEEN 20° TO 90°.
- 11kV DOUBLE CIRCUIT SHOWN IS TYPICAL, ADSS INSTALLATION MEASUREMENT IS TAKEN FROM LOWEST CIRCUIT CROSSARM.
- HARDWARE IN THIS ASSEMBLY IS RATED FOR SPANS NO GREATER THAN 200m.
- REFER TO MATERIAL SCHEDULE (SK-12) FOR THE RECOMMENDED STOCK CODE ITEM.



TRANSVERSE FACE
BANDED ASSEMBLY
SCALE 1:20



DETAIL B
SCALE 1:5



DESIGNED	KC	24.07.2020
CHECKED	JD	24.07.2020
DRAWN	KC	24.07.2020
CHECKED	JD	24.07.2020
APPROVED	IK	24.07.2020
A3 SCALE: AS SHOWN		

PROJECT NAME
ADSS LINE DESIGN ON EXISTING 11kV LINE - EAST HONIARA

PROJECT DESCRIPTION
EASTERN NETWORK ADSS LINE DESIGN

DRAWING TITLE
ADSS SHORT SPAN TENSION
BAND CLAMP OR BOLTED ASSEMBLY

DRAWING No.
SK-02

PROJECT No.

SHEET
REVISION
A3

A3	FOR CLIENT REVIEW - REFERENCE DRAWINGS ADDED.	KC	JD	KC	JD	07.2020
A2	FOR CLIENT REVIEW	KC	JD	KC	JD	06.2020
A1	FOR CLIENT REVIEW	KC	JD	KC	JD	05.2020
AMDT	AMENDMENT DETAIL	DESIGN	CHK'D	DRAWN	CHK'D	APP'D/DATE

PLOT DATE: May 06,2021 - 11:50am